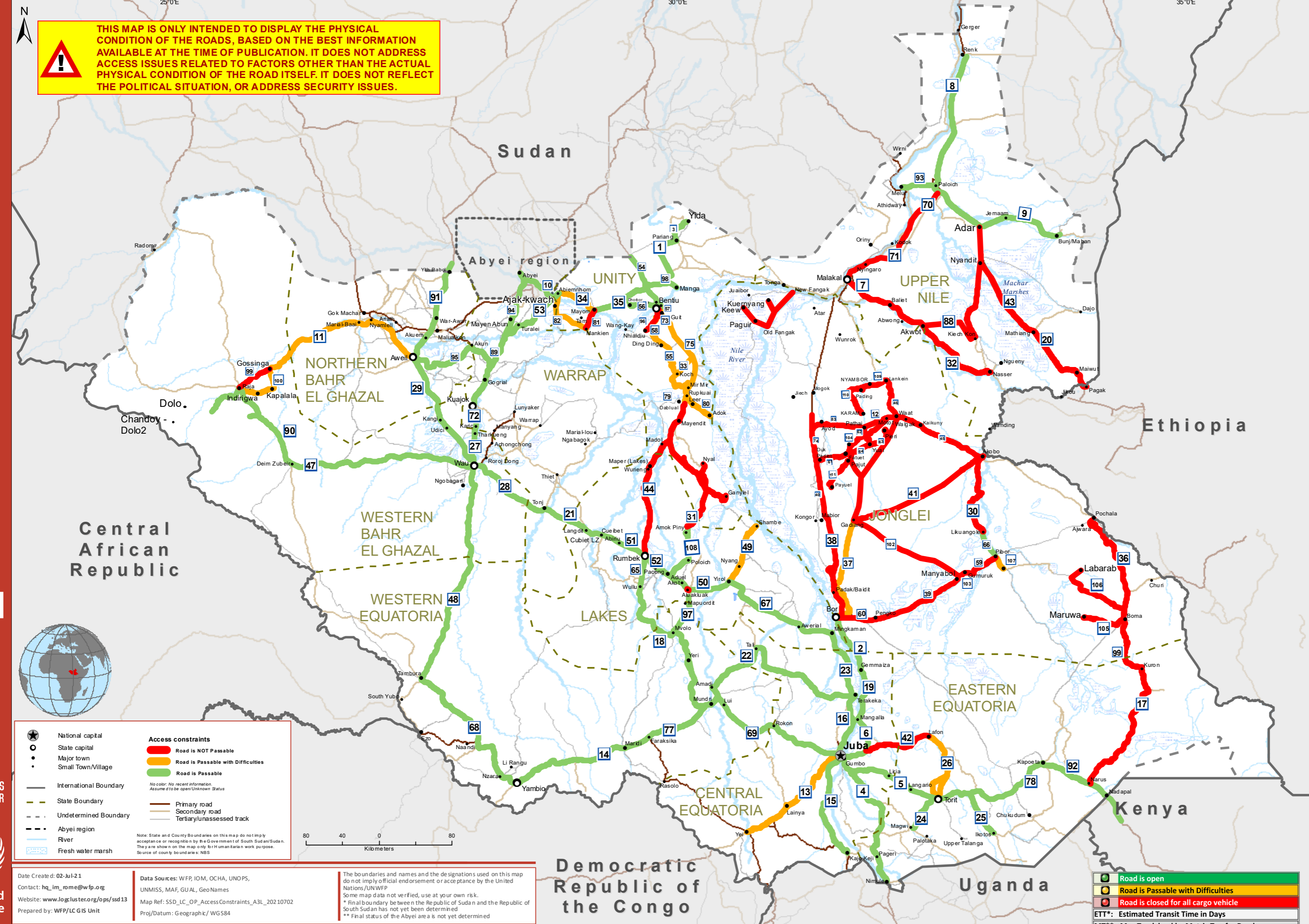


THIS MAP IS ONLY INTENDED TO DISPLAY THE PHYSICAL CONDITION OF THE ROADS, BASED ON THE BEST INFORMATION AVAILABLE AT THE TIME OF PUBLICATION. IT DOES NOT ADDRESS ACCESS ISSUES RELATED TO FACTORS OTHER THAN THE ACTUAL PHYSICAL CONDITION OF THE ROAD ITSELF. IT DOES NOT REFLECT THE POLITICAL SITUATION, OR ADDRESS SECURITY ISSUES.



Access constraints

- █ Road is NOT Passable
- █ Road is Passable with Difficulties
- █ Road is Passable

No color: No recent information. Assume to be open/Unknown Status.

Legend:

- ★ National capital
- State capital
- Major town
- Small Town/Village
- International Boundary
- - - State Boundary
- - - Undetermined Boundary
- - - Abyei region
- River
- Fresh water marsh
- Primary road
- Secondary road
- Tertiary/unassessed track

Note: State and County Boundaries on this map do not imply acceptance or recognition by the Government of South Sudan. The year shown on the map only for Humanitarian work purpose. Source of county boundary area: NBS

Date Create: 02-Jul-21
 Contact: hq_lm_rome@wfp.org
 Website: www.logcluster.org/ops/ssd13
 Prepared by: WFP/LC GIS Unit

Data Sources: WFP, IOM, OCHA, UNOPS, UNMISS, MAF, GUAL, GeoNames
 Map Ref: SSSD_LC_OP_AccessConstraints_A3L_20210702
 Proj/Datum: Geographic / WGS84

The boundaries and names and the designations used on this map do not imply official endorsement or acceptance by the United Nations/WFP.
 Some map data not verified, use at your own risk.
 * Final boundary between the Republic of Sudan and the Republic of South Sudan has not yet been determined.
 ** Final status of the Abyei area is not yet determined.

Road From To	ETT*	Recommended Truck Type	Source	Date
10	Abyei - Abienhom	40MT	WFP	24-12-20
9	Adar - Buni/Mabon	40MT	WFP	24-12-20
100	Adar - Amok Piny	40MT	WFP	01-08-21
91	Abuam - Wih Pabek	40MT	WFP	24-12-20
52	Aluaklak - Rumack	40MT	WFP	24-12-20
97	Aluaklak - Yriol	40MT	WFP	24-12-20
50	Aluaklak - Yriol	40MT	WFP	24-12-20
67	Aweril - Yriol	40MT	WFP	24-12-20
56	Bentiu - Dhorbar	40MT	WFP	24-12-20
1	Bentiu - Pariang	40MT	WFP	24-12-20
85	Dhorbar - Mayom	40MT	WFP	24-12-20
2	Gomocza - Bar	40MT	WFP	05-02-21
95	Gogrial - Akun - Gogrial	40MT	WFP	24-12-20
53	Gogrial - Turist - Abienhom	40MT	WFP	24-12-20
15	Juba - Kajo Keji	40MT	WFP	24-12-20
6	Juba - Mangalla	40MT	WFP	24-12-20
69	Juba - Mundri	40MT	WFP	24-12-20
4	Juba - Nimule	40MT	WFP	11-09-18
16	Juba - Ierakeka	40MT	WFP	24-12-20
5	Juba - Torit	40MT	WFP	13-11-20
92	Kapoeta - Nodopal	40MT	WFP	24-12-20
98	Manga Port - Rubkoma - Bentiu	40MT	WFP	24-12-20
19	Mangalla - Gamsira	40MT	WFP	24-12-20
14	Maridi - Yambio	40MT	WFP	24-12-20
93	Matidi - Paloch	40MT	WFP	24-12-20
77	Mundri - Maridi	40MT	WFP	24-12-20
18	Mundri - Wulu	40MT	WFP	24-12-20
45	Paloch - Adar	40MT	WFP	24-04-20
8	Paloch - Renk	40MT	WFP	03-04-20
66	Pibor - Uluangoc	40MT	WFP	01-04-21
76	Raja - Chandoy/Dolo2	40MT	WFP	24-12-20
47	Raja - Wau	40MT	WFP	24-12-20
54	Rubkoma - In the Border	40MT	WFP	16-10-20
51	Rumbek - Langdit	40MT	WFP	24-12-20
90	Sopa Bridge	40MT	WFP	24-12-20
23	Terakeka - Aweril	40MT	WFP	24-12-20
22	Terakeka - Tali - Mundri	40MT	WFP	24-12-20
72	Thor Kueng - Gogrial	40MT	WFP	24-12-20
21	Tanj - Langdit	40MT	WFP	24-12-20
24	Torit - Magwi	40MT	WFP	24-12-20
25	Torit - Kulos	40MT	WFP	24-12-20
78	Torit - Kapoeta	40MT	WFP	24-12-20
29	Wau - Aweril - Akunem	40MT	WFP	24-12-20
48	Wau - Tambura	40MT	WFP	24-12-20
27	Wau - Thor Kueng	40MT	WFP	24-12-20
28	Wau - Tanj	40MT	WFP	24-12-20
65	Wulu - Rumbek	40MT	WFP	24-12-20
89	Wunrok - Gogrial	40MT	WFP	24-12-20
94	Wunrok - Abyei	40MT	WFP	24-12-20
98	Yambio - Tamsara	40MT	WFP	24-12-20
5	Yriol - Pariang	40MT	WFP	24-12-20
42	Abienhom - Manluon	Specialized Trucks	WFP	31-12-20
11	Aweril - Gassinga	20MT	WFP	12-02-21
78	Bentiu - Guit	20MT	WFP	28-05-21
37	Bor - Gadjang	10MT	WFP	24-06-21
57	Dhorbar - Guli	70MT	WFP	24-05-21
55	Dinyding - Kuch	70MT	WFP	24-05-21
100	Gossinga - Kapalala - Raja	20MT	WFP	12-02-21
33	Guit - Koth	20MT	WFP	28-05-21
75	Guit - Mir mir	20MT	WFP	28-05-21
13	Juba - Lainya - Yri	20MT	WFP	03-06-21
80	Adal - Mir mir - Koth	Specialized Trucks	WFP	02-07-21
34	Mayom - Abienhom	33MT	WFP	28-05-21
107	Pibor - Verliet	Specialized Trucks	WFP	03-06-21
58	Rubkoma - Din Din	70MT	WFP	24-05-21
79	Rupkuel - Dehluol	Specialized Trucks	WFP	07-07-21
26	Torit - Lafon	20MT	WFP	25-12-20
49	Yriol - Shambe	20MT	WFP	24-12-20
30	Aluaklak - Uluangoc	WFP	17-04-20	
7	Abur - Ballek - Babaki	WFP	12-06-20	
88	Abur - Kuch Kuch	WFP	30-04-20	
32	Ahuot - Nasser	WFP	28-08-20	
31	Amok Piny - Mafot	WFP	26-03-21	
83	Ayod - Fathai - Mafot	WFP	24-03-21	
96	Bentiu - Mhialaku	WFP	11-06-21	
36	Bomo - Pochala	WFP	02-07-21	
106	Boma - Labarab	WFP	13-03-21	
105	Boma - Maruwa	WFP	02-07-21	
38	Bor - Malak	WFP	24-05-20	
60	Bor - Pariang	WFP	24-06-21	
71	Duk Fadiet - Ayod	WFP	23-05-20	
61	Duk Fadiet - Pajut	WFP	24-06-21	
104	Fathai - Mafot - Waat	WFP	24-06-21	
41	Eshanga - Akaba	WFP	14-10-18	
98	Gossinga - Raja	WFP	12-02-21	
59	Gumukuk - Pibor	WFP	24-06-21	
42	Juba - Lafon	WFP	28-11-18	
46	Kaikuony - Walyak - Wasi - Lankein	WFP	24-06-21	
75	Kaikuony - Akabu	WFP	01-04-21	
70	Kodok - Paloch	WFP	15-10-20	
109	Kuron Bridge	WFP	02-07-21	
99	Lainya - Nyamboc - Pading	WFP	23-06-21	
40	Mafot - Duk Fadiet	WFP	28-05-20	
71	Malakal - Kodok	WFP	16-10-20	
102	Manjari - Gadiang - Waat	WFP	24-06-21	
103	Manjari - Gumukuk	WFP	24-06-21	
107	Manjari - Gumukuk	WFP	07-05-20	
43	Mishiang - Guel Guel	WFP	23-05-20	
81	Mayom - Menkien	WFP	18-06-20	
12	Mafot - Fathai	WFP	24-06-21	
17	Maru - Boma	WFP	02-06-20	
86	New Fangak - Kuernyang	WFP	05-05-21	
101	Nyal - Ganyiel	WFP	24-06-21	
110	Nyamboc - Pading - Karam	WFP	24-06-21	
84	Nyamboc - Kich Kich	WFP	30-08-20	
70	Pagok - Malakal - Malakal	WFP	24-06-21	
111	Pajut - Pajut	WFP	24-06-21	
39	Pengko - Manjari	WFP	24-06-21	
44	Rumbek - Mayendit - Dabluol	WFP	12-02-21	
87	Wathral - Kow	WFP	12-06-20	
64	Yau - Pajut	WFP	24-06-21	
62	Yau - Fathai	WFP	24-06-21	
63	Yau - Pajut	WFP	24-06-21	

Legend:

- █ Road is open
- █ Road is Passable with Difficulties
- █ Road is closed for all cargo vehicle

ETT*: Estimated Transit Time in Days
 MT**: Max Truck load by Metric Ton for Road

USAID
 UKaid
 EUROPEAN COMMISSION
 WFP
 World Food Programme