



# Log.IE Rapid Data Collection

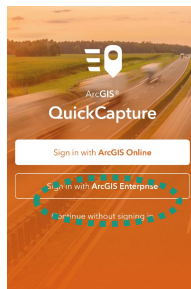
## Getting Started



1

### Install QuickCapture APP

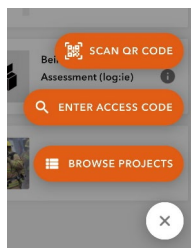
Install the data collection app **ArcGIS Quickcapture** in your Google Play Store or Apple AppStore



2


### Open QuickCapture

Click on the App Icon, and Select "Continue without Signing in"



3

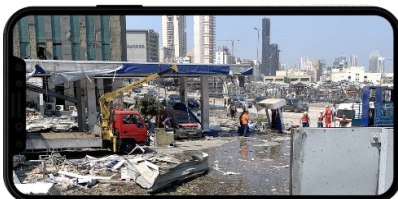
### Add Data Collection (first time)

Click on the plus icon  at the bottom and enter the access code or scan the QR code.

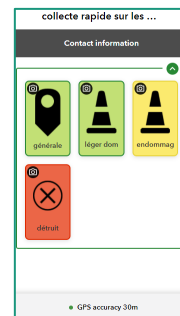
4

### Start Collecting

Whenever you encounter an important point. Open the app, take a picture and provide additional information.



### Rapid Damage Assessment

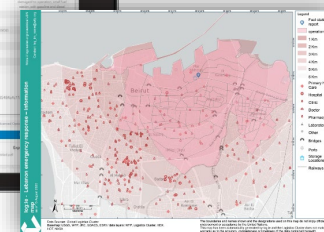
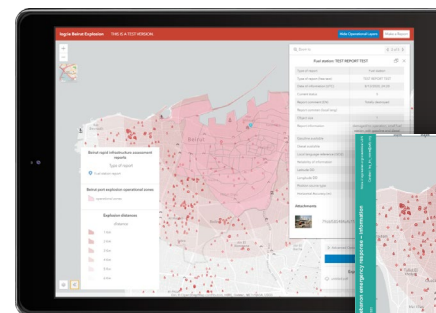


Access Code:  
**OfKn0K**

### Road and Bridge Access



Access Code:  
**mOvCz0**



### Automatic transfer

As soon as your mobile has internet, the reports are automatically sent to log.ie Where your information will be supporting the whole humanitarian community. Thank you!



[Logie.logcluster.org/?op=hti-21-a](https://logie.logcluster.org/?op=hti-21-a)



# Log.IE Collecte rapide de données

Pour commencer



1

## Installer QuickCapture APP

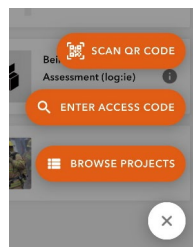
Installez l'application de collecte de données ArcGIS Quickcapture dans votre Google Play Store ou Apple AppStore.



2


## Ouvrir QuickCapture

Cliquez sur l'icône de l'application, et sélectionnez "Continuer sans se connecter".



3

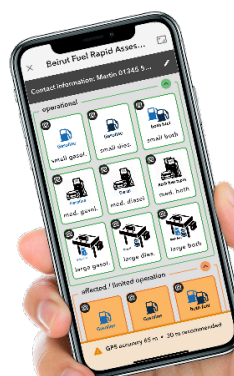
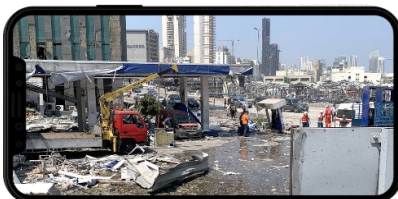
## Ajouter la collecte (1ère fois)

Cliquez sur l'icône plus  en bas et saisissez le code d'accès ou scannez le code QR.

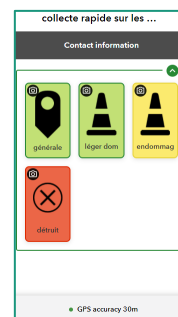
4

## Commencez à collecter

Chaque fois que vous rencontrez un point important. Ouvrez l'application, prenez une photo et fournissez des informations supplémentaires.



## Évaluation rapide des dommages

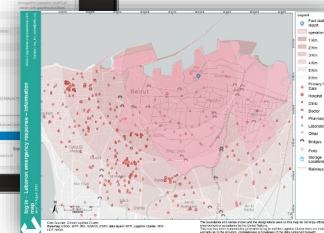
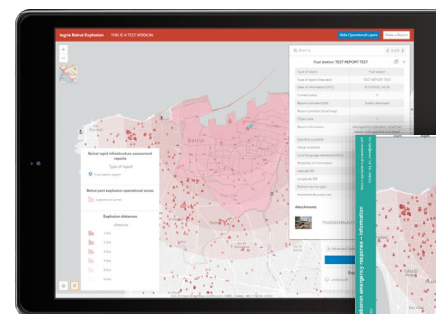


Code d'accès  
OfKn0K

## Accès aux routes et aux ponts



Code d'accès  
mOvCz0



## Transfert automatique

Dès que votre portable dispose d'internet, les rapports sont automatiquement envoyés à log.ie où vos informations serviront à l'ensemble de la communauté humanitaire. Merci !



[Logie.logcluster.org/?op=hti-21-a](https://logie.logcluster.org/?op=hti-21-a)

# Public interface - Log.ie

## The manual



**[NAVIGATION]** Click on the map and move to change the area you are seeing and use the +/- buttons or scroll with your mouse's wheel to zoom in and out.

### **[CHANGE THE BASE MAP]**

Available base maps:

- **Grey:** neutral map – easy to see information points
- **Open Street Map:** general information like roads, buildings, general facilities
- **Satellite:** visual imagery of the surface (not live)

### **[SELECT THE MODULE]**

Choose between selected information modules (e.g.: Physical Access Constraining and Logistics Capacity Mapping, among others)

### **[CHOOSE THE INFORMATION YOU WANT TO SEE]**

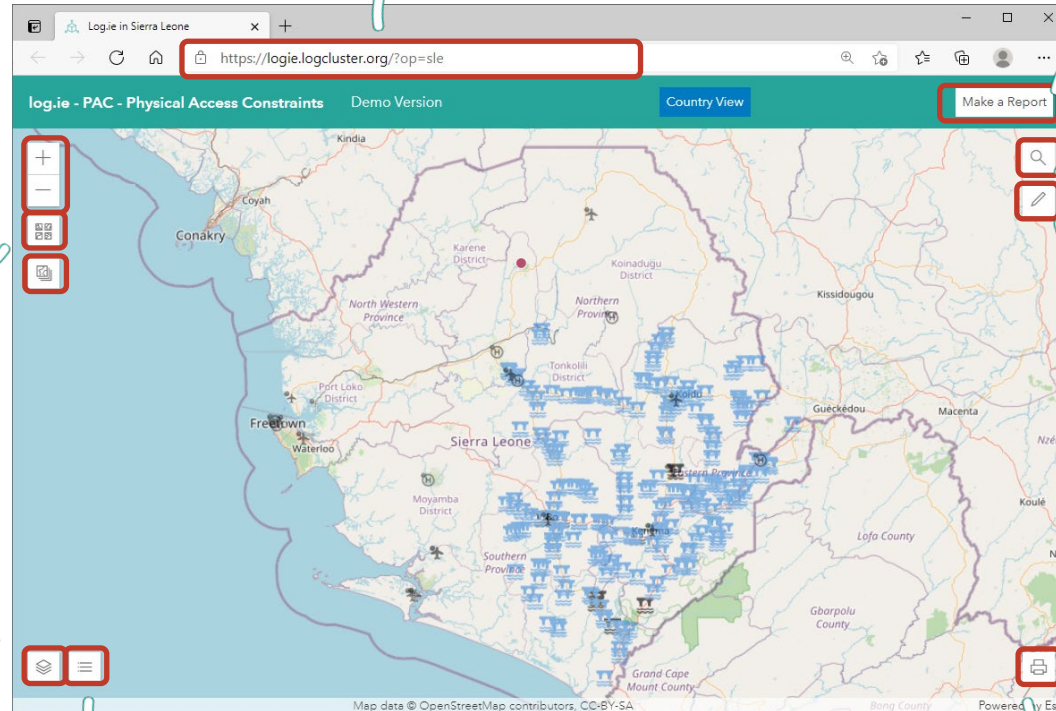
You can show/hide information layers by clicking on the eye icon that will appear when you click on the icon.. Grouped layers are characterized by a triangle, click on it to open the group. Information layers that display a moving bar are downloading.

### **[UNDERSTAND EVERY ICON]**

Here you find the meaning and explanation of each icon (the legend)

### **[ENTER TO THE INTERFACE]**

By using this url.



**[MAKE A REPORT]** With the same objective as the data collection app, click on the specific location of the map and you will be able to make a report.

**[FIND WHAT YOU ARE LOOKING FOR]** Use this icon to look for a location you want to find in a map

### **[DRAW SOMETHING ON THE MAP]**

- 1) Click on the sketch icon
- 2) Choose the shape you want to draw
- 3) Click and drag on the map (for lines/polygons: hold and draw OR click for a new point and double-click at last point to finish)
- 4) You can click on the element to move, resize, rotate, change the shape or even delete it

### **[EXPORT AND SHARE MAPS]**

- 1) What you see in the map is what you will print (sketches included)
- 2) Edit the title, select the layout and click on 'export'
- 3) The advanced option gives you the opportunity to select the resolution (by default standard resolution is on 150 dpi, changing it to 300 dpi would make it High resolution)

# Introducing Log.ie

## Logistics Information Exchange platform

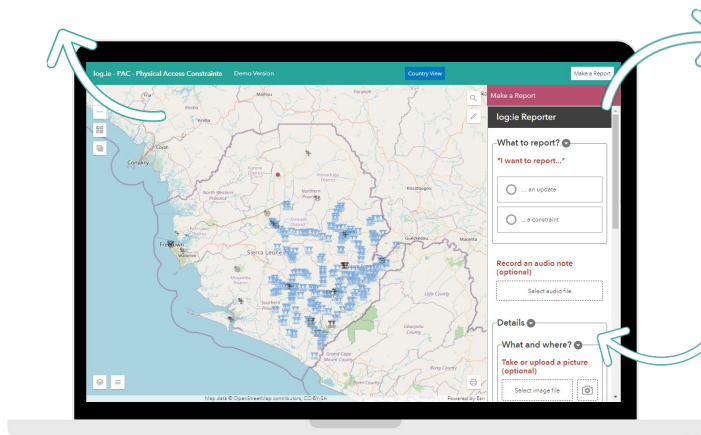


Aware of the already existing 1) vast amount of information on global on local level and 2) platforms an technology already in used by the community and 3) willingness of sharing information for a bigger cause; Log.ie does not try to invent the wheel another time. The focus of Log.ie is to interlink them in a common information gateway to provide timely analysis for logistics responders to be better prepared, better informed, and better coordinated.

Log.ie aims to improve access to data sources that are not yet accessible or processable and improve the predictability, timeliness, and efficiency of humanitarian emergency response.

### NO COMPUTER NECESSARY

The Log.ie system is designed with you - the Logistician - in mind. Heading to the hub and you don't have access to a computer? No problem, you can export the live view as a static PDF and print it on the spot.

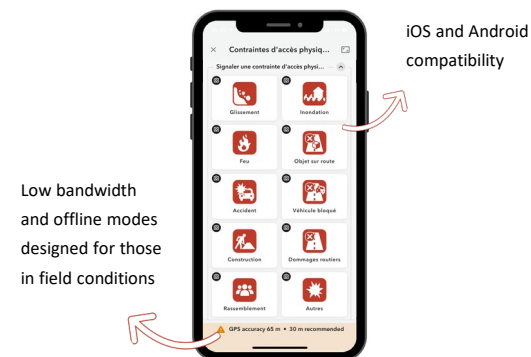


### PICK AND PLACE INFORMATION ON THE MAP

You can choose which the information layer(s) you want to see on the map. Some of the information layers that you can see are: road access constraints, airport closures, impact on warehouses, as well as live visualisation of the Logistics Cluster operational presence including logistics hubs, available common services and contact points. How exactly is this data collected? That's all explained in the timeline below!

### LOG.IE AS A TRAINING TOOL

The humanitarian community can take advantage of the Log.ie system and information as part of a **simulation exercise** to see which infrastructures may be affected by natural disasters like earthquakes and tropical storms, strengthening both preparedness activities and operational planning.\*



Low bandwidth and offline modes designed for those in field conditions

iOS and Android compatibility

### STRAIGHT FROM THE FIELD

At its core, Log.ie is built on the Logistics Cluster approach: collaborating for the most efficient logistics response. That's exactly what log.ie aims to achieve with its field data collection functionality. By creating a tool which allows the logistics community to directly share and contribute data as it happens, we make sure timely and relevant information is available.



Scan the QR code using your smartphone camera to access the reporting tool.

## HOW IS DATA COLLECTED THROUGH Log.ie?

### EXISTING DATA



As information gateway Log.ie connects to global and national data sources integrating them into a common data model. This data model organizes the information into layers and makes this information ready to be visible in the interface

### COLLECT



Colleagues on the ground can share new information, like a blocked road or damaged warehouse, directly with the Log.ie system from their phones using apps and surveys.

### VALIDATE



Before an incoming field report or any other information is visible to the public, it first passes through a dedicated focal point, who validates and edits a.k.a verifies and checks the incoming information.

### SHARE



Once the information has been validated and cleared for publication, it becomes available to the humanitarian community around the globe through an interactive interface.

## WANT TO KNOW MORE?

**Bernat Escarré**

Log.ie project manager (Global Logistics Cluster)

[bernat.escarrepons@wfp.org](mailto:bernat.escarrepons@wfp.org)

<https://logcluster.org/preparedness>

\*To use the tool as part of a training activity, dedicated support from the Logistics Cluster technical team is required.