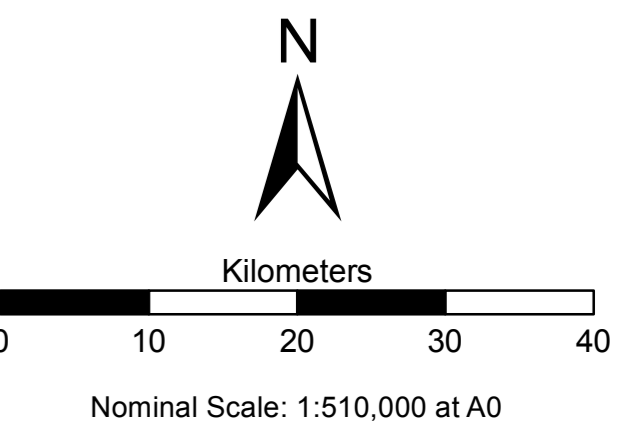


CENTRAL AFRICAN REPUBLIC

HAUTE-KOTTO PREFECTURE



Populated Places

- National Capital
- Major Town/Prefecture Capital
- Intermediate Town
- Small Town
- Village

Airports

- + Airstrip

Road Network

- Primary
- Secondary
- Tertiary
- Track/Trail

Administrative Boundaries

- International
- Prefecture
- Sous-Prefecture
- Commune

Hydrology

- Surface Waterbody
- River

Elevation

- 2,000m.
- 0m.

