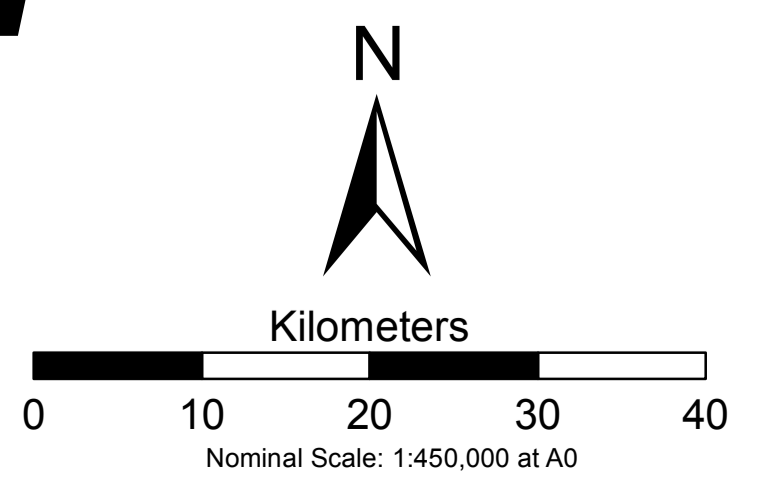


CENTRAL AFRICAN REPUBLIC

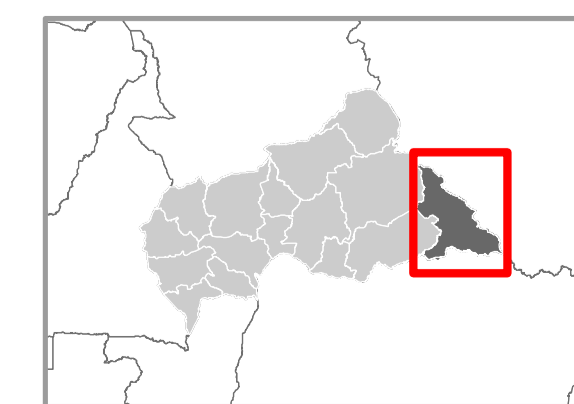
HAUT MBOMOU PREFECTURE



- Populated Places**
- National Capital
 - Major Town/Prefecture Capital
 - Intermediate Town
 - Small Town
 - Village
- Airports**
- + Airstrip

- Road Network**
- Primary
 - Secondary
 - Tertiary
 - Track/Trail
- Administrative Boundaries**
- International
 - Prefecture
 - Sous-Prefecture
 - Commune

- Hydrology**
- River
 - Surface Waterbody
- Elevation**
- 2,000m.
 - 0m.



Date Created: 14 - JAN - 2014
 Map Num: CAF_GLM_HautMbomou_A0P
 Coord System/Datum: Geographic/WGS84
 Data Sources: UNGI/WG, OCHA, Geonames, WFP, GLCSC
 The boundaries and names and the designations used on this map do not imply official endorsement or acceptance by the United Nations.
 Email: maps@logcluster.org
 Website: www.logcluster.org
 OMEP GIS Unit, WFP HQ, Rome, Italy