



Central African Republic



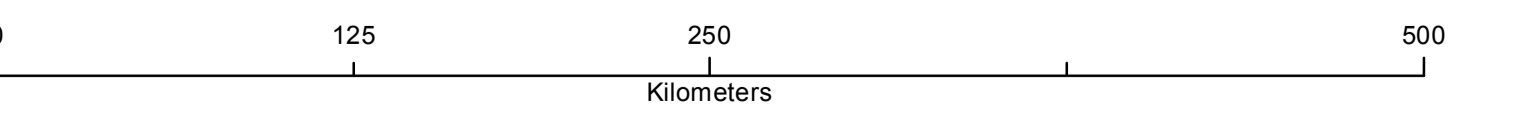
DEMOCRATIC REPUBLIC OF THE CONGO

General Logistics Planning Map

Nominale scale 1:2.650.000 at format A0

Legend

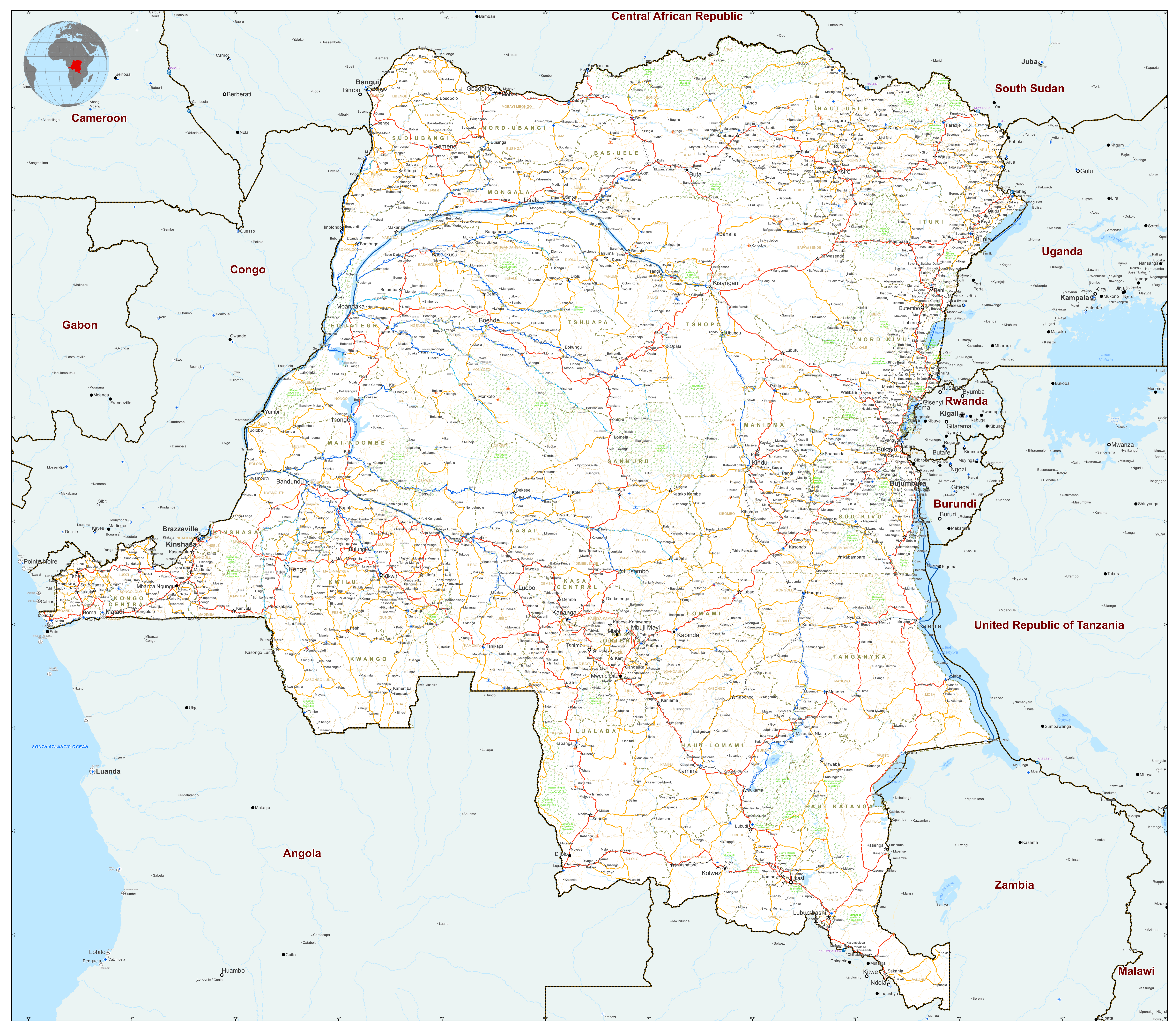
- National Capital
- Provincial Capital
- Major Town
- Intermediate Town
- Territory Capital
- Collectivity Capital
- Main Villages
- International Airport
- Domestic Airport
- Airstrip
- Sea port
- River port
- Lake port
- Crossing ferry - Working
- Crossing ferry - Fixable
- Crossing ferry - Final failure
- Crossing ferry - Private
- Crossing ferry - Lost
- Border Crossing Point
- Primary Road
- Secondary Road
- Tertiary Road
- Local Road
- Railway
- Waterway : Category 1
Draught of 1.50 m in high water and 1.30 m in low water. Allows the use of units from 600 to 1200 tons.
- Waterway : Category 2
Draught of 1.40 m in high water and 1.00 m in low water. Is accessible to units of 200 to 400 tons.
- Waterway : Category 3
Draught of 1.20 m in high water and 0.80 m in low water. Is accessible to units of 50 to 200 tons.
- International boundary
- Province boundary
- Territory boundary
- River
- Waterbody
- Nature Reserve



Date Created: 06-Feb-2017
 Contact: log_cluster@wfp.org
 Website: www.logcluster.org
 Prepared by: Logistics Cluster, Kinshasa - DRC

Coord. System (Datum): Geographic/WGS84
 Map Reference: GDD_GLUPM_GDD_AR_20170201

Data sources: RSC, WFP, UN/FAO, GeoNames, GAUL
 The boundaries and names shown and the designations used on this map do not imply official endorsement or acceptance by the United Nations.



DEMOCRATIC REPUBLIC OF THE CONGO

General Logistics Planning Map

Nominale scale 1:2.650.000 at format A0

Legend

- National Capital
- Provincial Capital
- Major Town
- Intermediate Town
- Territory Capital
- Collectivity Capital
- Main Villages
- International Airport
- Domestic Airport
- Airstrip
- Sea port
- River port
- Lake port
- Crossing ferry - Working
- Crossing ferry - Fixable
- Crossing ferry - Final failure
- Crossing ferry - Private
- Crossing ferry - Lost
- Border Crossing Point
- Primary Road
- Secondary Road
- Tertiary Road
- Local Road
- Railway
- Waterway : Category 1
Draught of 1.50 m in high water and 1.30 m in low water. Allows the use of units from 600 to 1200 tons.
- Waterway : Category 2
Draught of 1.40 m in high water and 1.00 m in low water. Is accessible to units of 200 to 400 tons.
- Waterway : Category 3
Draught of 1.20 m in high water and 0.80 m in low water. Is accessible to units of 50 to 200 tons.
- International boundary
- Province boundary
- Territory boundary
- River
- Waterbody
- Nature Reserve

Date Created: 06-Feb-2017
 Contact: log_cluster@wfp.org
 Website: www.logcluster.org
 Prepared by: Logistics Cluster, Kinshasa - DRC

Coord. System (Datum): Geographic/WGS84
 Map Reference: GDD_GLUPM_GDD_AR_20170201

Data sources: RSC, WFP, UN/FAO, GeoNames, GAUL
 The boundaries and names shown and the designations used on this map do not imply official endorsement or acceptance by the United Nations.