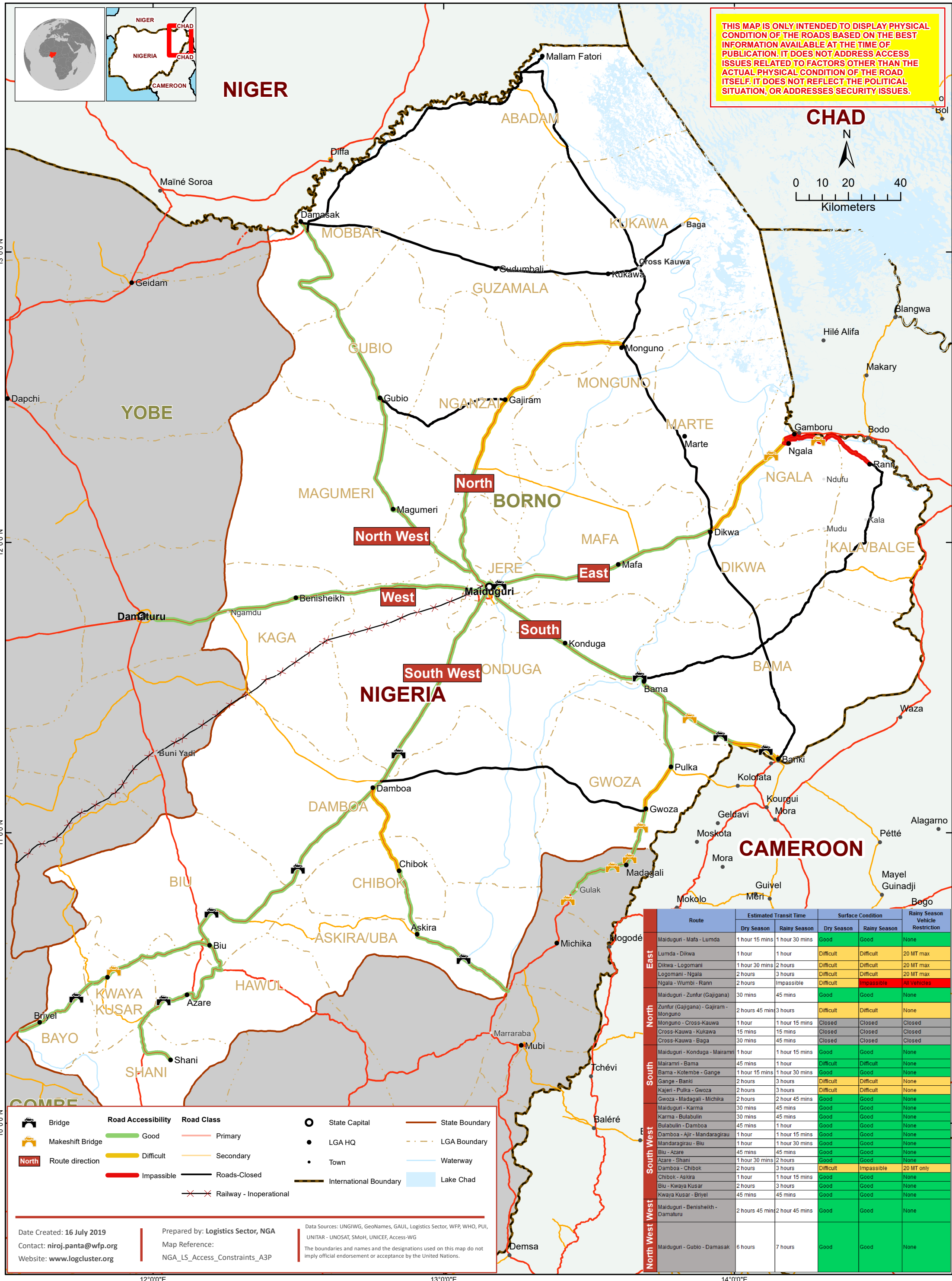


NIGERIA - BORNO STATE

Physical Road Access Constraints, July 2019

THIS MAP IS ONLY INTENDED TO DISPLAY PHYSICAL CONDITION OF THE ROADS BASED ON THE BEST INFORMATION AVAILABLE AT THE TIME OF PUBLICATION. IT DOES NOT ADDRESS ACCESS ISSUES RELATED TO FACTORS OTHER THAN THE ACTUAL PHYSICAL CONDITION OF THE ROAD ITSELF. IT DOES NOT REFLECT THE POLITICAL SITUATION, OR ADDRESSES SECURITY ISSUES.



	Route	Estimated Transit Time		Surface Condition		Rainy Season Vehicle Restriction
		Dry Season	Rainy Season	Dry Season	Rainy Season	
East	Maiduguri - Mafa - Lumda	1 hour 15 mins	1 hour 30 mins	Good	Good	None
	Lumda - Dikwa	1 hour	1 hour	Difficult	Difficult	20 MT max
	Dikwa - Logomani	1 hour 30 mins	2 hours	Difficult	Difficult	20 MT max
	Logomani - Ngala	2 hours	3 hours	Difficult	Difficult	20 MT max
	Ngala - Wumbi - Rann	2 hours	Impossible	Difficult	Impossible	All Vehicles
North	Maiduguri - Zunftur (Gajigana)	30 mins	45 mins	Good	Good	None
	Zunftur (Gajigana) - Gajiram - Monguno	2 hours 45 mins	3 hours	Difficult	Difficult	None
	Monguno - Cross-Kauwa	1 hour	1 hour 15 mins	Closed	Closed	Closed
	Cross-Kauwa - Kukawa	15 mins	15 mins	Closed	Closed	Closed
South	Cross-Kauwa - Baga	30 mins	45 mins	Closed	Closed	Closed
	Maiduguri - Konduga - Mairamri	1 hour	1 hour 15 mins	Good	Good	None
	Mairamri - Bama	45 mins	1 hour	Difficult	Difficult	None
	Bama - Kotembe - Gange	1 hour 15 mins	1 hour 30 mins	Good	Good	None
	Gange - Banki	2 hours	3 hours	Difficult	Difficult	None
	Kajeri - Pulka - Gwoza	2 hours	3 hours	Difficult	Difficult	None
	Gwoza - Madagali - Michika	2 hours	2 hour 45 mins	Good	Good	None
	Maiduguri - Karma	30 mins	45 mins	Good	Good	None
	Karma - Bulabulin	30 mins	45 mins	Good	Good	None
	Bulabulin - Damboa	45 mins	1 hour	Good	Good	None
South West	Damboa - Ajir - Mandaragirau	1 hour	1 hour 15 mins	Good	Good	None
	Mandaragirau - Biu	1 hour	1 hour 30 mins	Good	Good	None
	Biu - Azare	45 mins	45 mins	Good	Good	None
	Azare - Shani	1 hour 30 mins	2 hours	Good	Good	None
	Damboa - Chibok	2 hours	3 hours	Difficult	Impossible	20 MT only
North West	Chibok - Askira	1 hour	1 hour 15 mins	Good	Good	None
	Biu - Kwaya Kusar	2 hours	3 hours	Good	Good	None
	Kwaya Kusar - Briyel	45 mins	45 mins	Good	Good	None
	Maiduguri - Benisheikh - Damaturu	2 hours 45 mins	2 hour 45 mins	Good	Good	None
North West West	Maiduguri - Gubio - Damasak	6 hours	7 hours	Good	Good	None