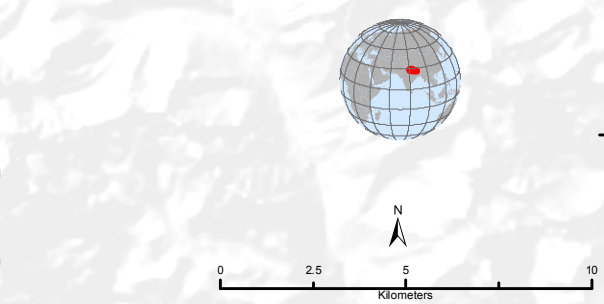
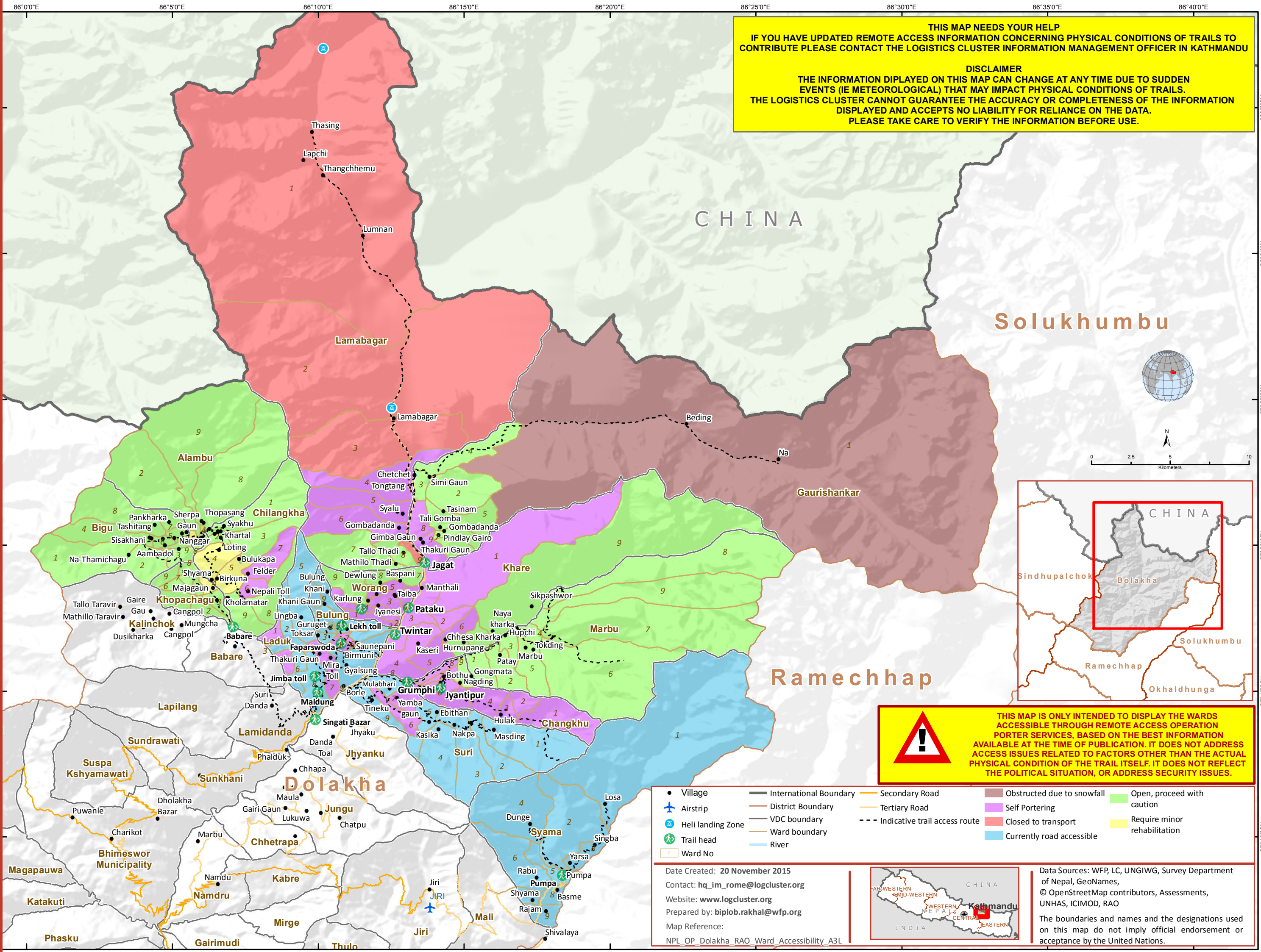


THIS MAP NEEDS YOUR HELP
IF YOU HAVE UPDATED REMOTE ACCESS INFORMATION CONCERNING PHYSICAL CONDITIONS OF TRAILS TO CONTRIBUTE PLEASE CONTACT THE LOGISTICS CLUSTER INFORMATION MANAGEMENT OFFICER IN KATHMANDU

DISCLAIMER
THE INFORMATION DISPLAYED ON THIS MAP CAN CHANGE AT ANY TIME DUE TO SUDDEN EVENTS (IE METEOROLOGICAL) THAT MAY IMPACT PHYSICAL CONDITIONS OF TRAILS. THE LOGISTICS CLUSTER CANNOT GUARANTEE THE ACCURACY OR COMPLETENESS OF THE INFORMATION DISPLAYED AND ACCEPTS NO LIABILITY FOR RELIANCE ON THE DATA. PLEASE TAKE CARE TO VERIFY THE INFORMATION BEFORE USE.



THIS MAP IS ONLY INTENDED TO DISPLAY THE WARDS ACCESSIBLE THROUGH REMOTE ACCESS OPERATION PORTER SERVICES, BASED ON THE BEST INFORMATION AVAILABLE AT THE TIME OF PUBLICATION. IT DOES NOT ADDRESS ACCESS ISSUES RELATED TO FACTORS OTHER THAN THE ACTUAL PHYSICAL CONDITION OF THE TRAIL ITSELF. IT DOES NOT REFLECT THE POLITICAL SITUATION, OR ADDRESS SECURITY ISSUES.

- Village
- International Boundary
- Secondary Road
- Obstructed due to snowfall
- ✈ Airstrip
- District Boundary
- Tertiary Road
- Self Portering
- ⊙ Heli landing Zone
- VDC boundary
- - - Indicative trail access route
- Closed to transport
- Open, proceed with caution
- 🌳 Trail head
- Ward boundary
- Currently road accessible
- Require minor rehabilitation
- ☐ Ward No
- River

Date Created: 20 November 2015
 Contact: hq_im_rome@logcluster.org
 Website: www.logcluster.org
 Prepared by: biplob.rakhal@wfp.org
 Map Reference:
 NPL_OP_Dolakha_RAO_Ward_Accessibility_A3L



Data Sources: WFP, LC, UNGIWG, Survey Department of Nepal, GeoNames, © OpenStreetMap contributors, Assessments, UNHAS, ICIMOD, RAO

The boundaries and names and the designations used on this map do not imply official endorsement or acceptance by the United Nations.